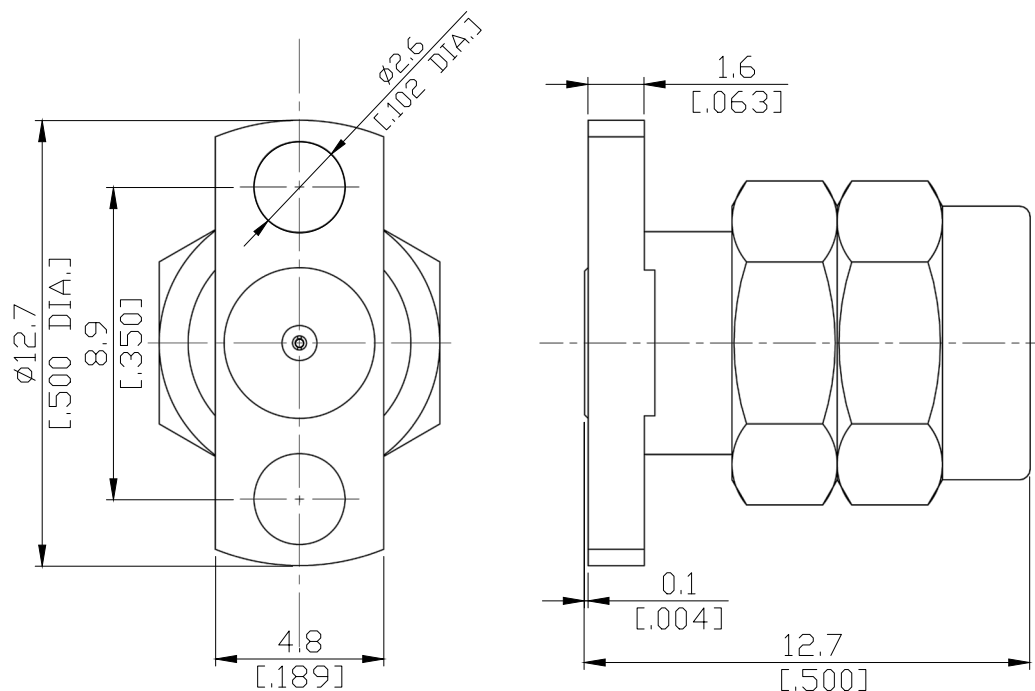


2.4mm Plug (male) Connector 2 Straight Field Replaceable  
8.9mm (.350 inch) Hole Spacing, DC-50GHz VSWR 1.15

## Q1BT50-0012B / 9XX



All dimensions are in mm [inch]

Tolerances according to DIN ISO 2768-mH

### Interface

According to

IEC 61169-35 ; MIL-STD-348B/324

### Electrical Data

Impedance	50 Ω
Frequency	DC to 50 GHz
VSWR (Return loss)	≤1.15 (≥ 23.13 dB)
Insertion Loss	≤ 0.01 x √F (GHz) dB
Insulation Resistance	≥ 5 GΩ
Center Contact Resistance	≤ 3.0 mΩ
Outer Contact Resistance	≤ 2.0 mΩ
Test Voltage	750V rms
Working voltage	250 V rms
Power handling	≥ 100 dB up to 1 GHz

### Material And Plating

Piece Parts	Material	Plating
Centre contact	Beryllium Copper	Gold plating, 3 μinch (Non-magnetic nickel-phosphorus underplating, 80 μinch)
Body	Stainless Steel	Passivated
Insulator	PEI	
Gasket	Silicone Rubber	
Coupling nut	Stainless Steel	Passivated

The facts and figures herein are carefully compiled to the best of our knowledge, but they are intended for general informational purposes only. In the effort to improve our products, we reserve the right to make changes judged to be necessary.

Rev.:-

Date:  
JUL/16/2021

Rosnol RF/Microwave Technology Co., Ltd.  
[www.rosnol.com](http://www.rosnol.com); [info@rosnol.com](mailto:info@rosnol.com)  
Phone: +886-3-463-5095 / Fax: +886-3-463-5952  
N-CAGE Code: SFKK0 / ISO9001 Certified

Page

1/2

2.4mm Plug (male) Connector 2 Straight Field Replaceable  
8.9mm (.350 inch) Hole Spacing, DC-50GHz VSWR 1.15

## Q1BT50-0012B / 9XX

### Mechanical Data

Coupling mechanisms	Screw-lock
Mating Cycles	≥ 500
Captivated Type	Mechanical
Center Contact Captivation: axial	≥ 20 N
Coupling Test Torque	1.70 Nm
Recommended Torque	0.80 Nm to 1.10 Nm

### Environmental Data

Temperature Range	-55°C to +165°C
Thermal shock	MIL-STD-202, Meth. 107, Cond. B
Corrosion	MIL-STD-202, Meth. 101, Cond. B
Vibration	MIL-STD-202, Meth. 204, Cond. D
Shock	MIL-STD-202, Meth. 213, Cond. G
Moisture Resistance	MIL-STD-202, Meth. 106
RoHS	compliant

### Packing

Single or 100